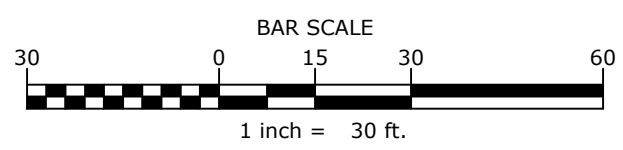
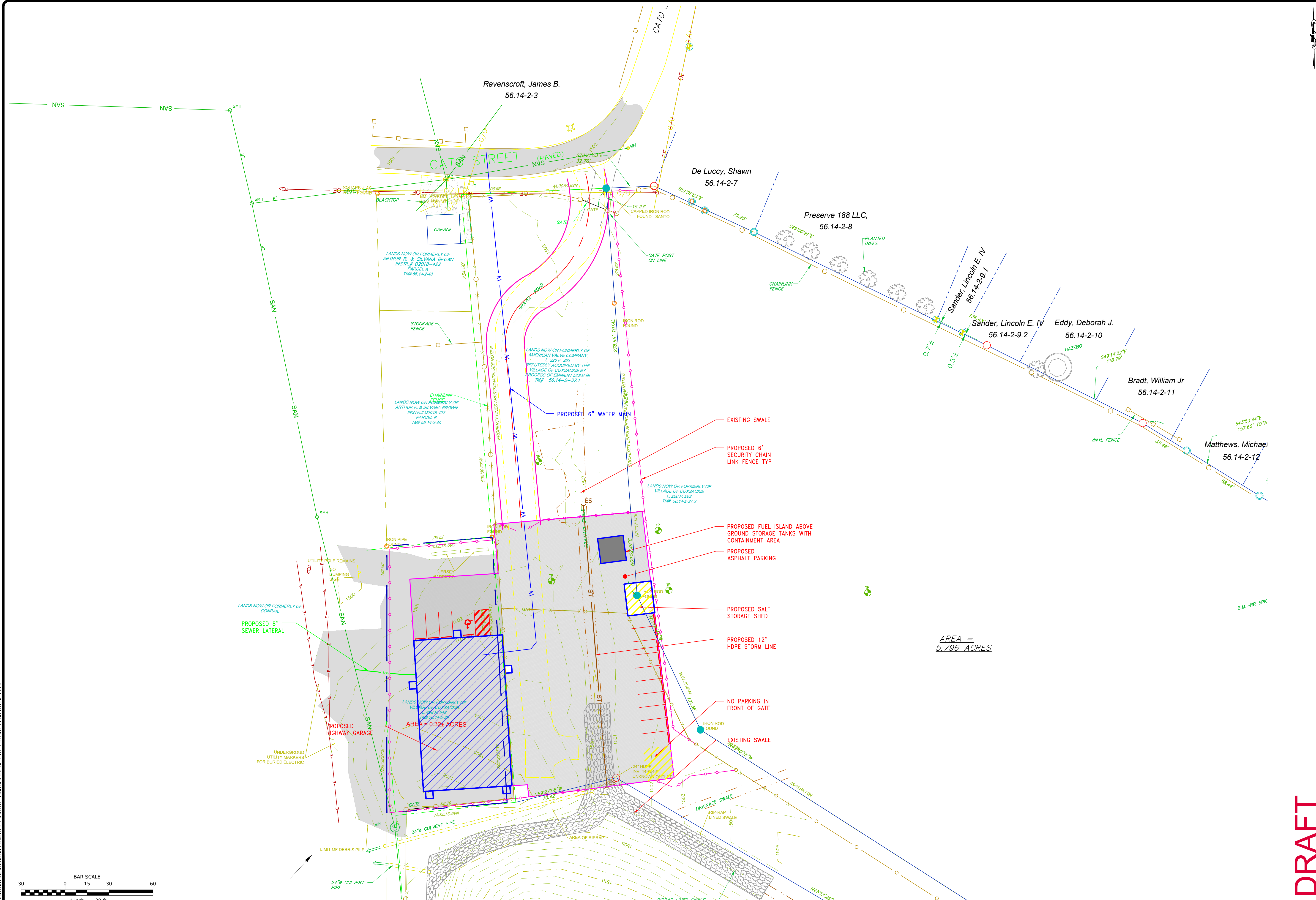


H:\DRAWINGS\COXSACKIE\94-3128_HIGHWAY GARAGE\C-102 SITE LAYOUT PLAN DWG\G31128



DATE: 3/5/26
DRAWN BY: ERNSTJ
SCALE: AS SHOWN
REVIEWED BY: XXX
PROJECT NO.: XX-XXX

DELAWARE ENGINEERING, D.P.C.
CIVIL AND ENVIRONMENTAL ENGINEERING

28 MADISON AVENUE EXTENSION, ALBANY, NY 12203 - 518.452.1280
55 SOUTH MAIN ST., ONEONTA, NY 13820 - 607.432.8073
65 W. 1ST ST., COXSACK, NY 12045 - 518.462.1280
55 FARMWAY, SONNICHSEN, NY 12177 - 845.917.7777
223 MAIN ST., GOSHEN, NY 10924 - 518.462.1290
14-20 WILLET AVE., PORT CHESTER, NY 10573 - 914.939.0390

REVISIONS	
NO.	DESCRIPTION

NEW COXSACKIE HIGHWAY GARAGE VILLAGE OF COXSACKIE GREENE COUNTY, NY

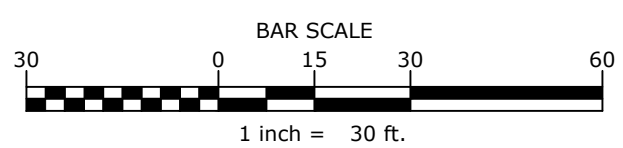
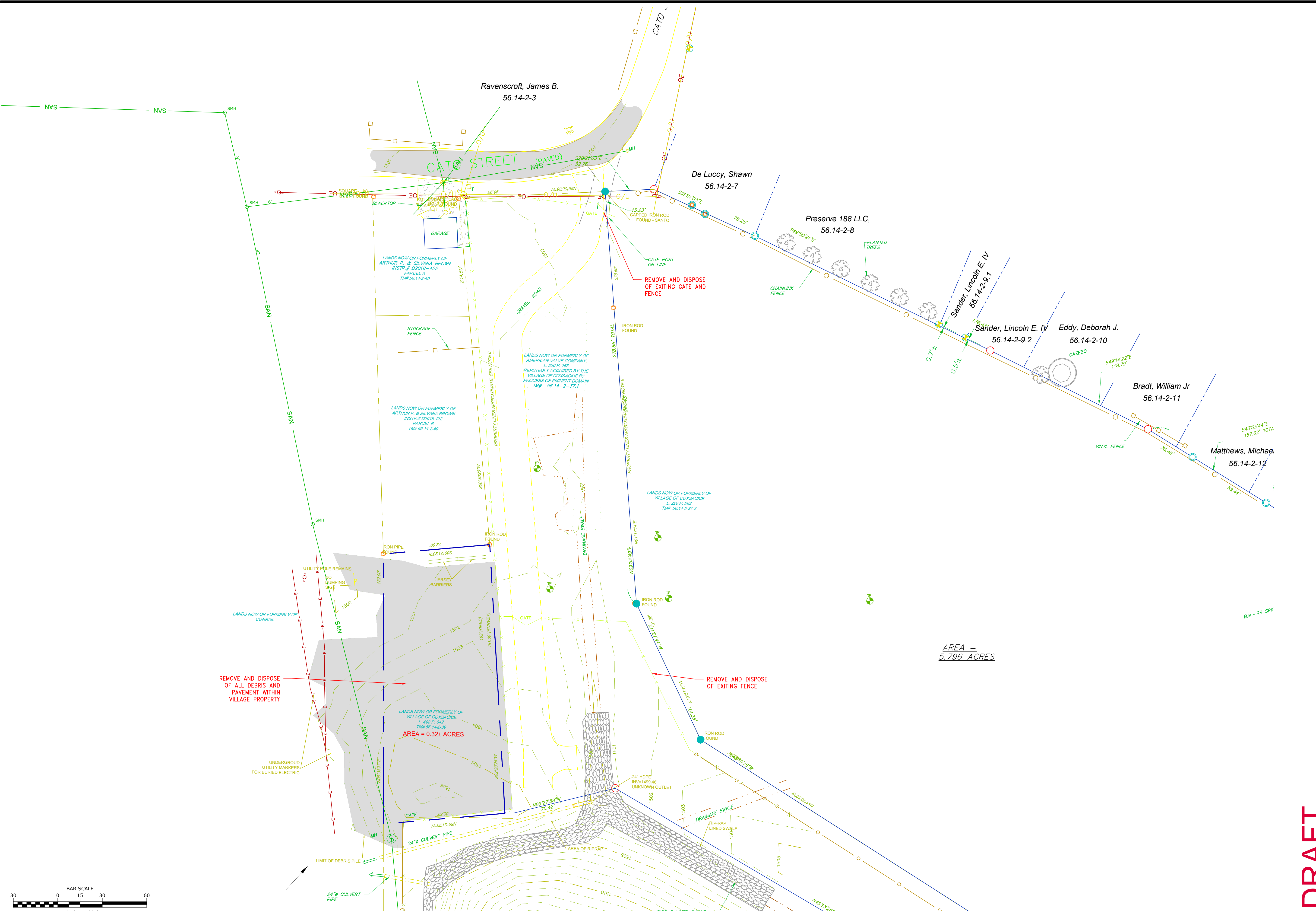
HIGHWAY GARAGE SITE PLAN

SHEET: FIG1

DRAFT

WARNING - IT IS A VIOLATION OF NEW YORK EDUCATION LAW SECTION 7209.2, FOR ANY PERSON, UNLESS HE IS ACTING UNDER THE DIRECTION OF A LICENSED PROFESSIONAL ENGINEER OR LAND SURVEYOR, TO ALTER THIS DOCUMENT IN ANY WAY. IF ALTERED THE ALTERING PERSON SHALL COMPLY WITH THE REQUIREMENTS OF NEW YORK EDUCATION LAW, SECTION 7209.2.

H:\DRAWINGS\COXSACKIE\94-3128_HIGHWAY GARAGE\C101.DWG(3/1/26)



AREA = 5.796 ACRES

DATE: 2/26/26
DRAWN BY: ERNSTJ
SCALE: AS SHOWN
REVIEWED BY: XXX
PROJECT NO.: XX-XXX

DELAWARE ENGINEERING D.P.C.
CIVIL AND ENVIRONMENTAL ENGINEERING
28 MADISON AVENUE EXTENSION, ALBANY, NY 12203 - 518.452.1290
55 SOUTH MAIN ST., ONEONTA, NY 13820 - 607.432.8073
1000 W. STATE ST., SONNITZVILLE, NY 12152 - 518.532.1290
506 BROADWAY, GOSHEN, NY 12721 - 845.591.7777
223 MAIN ST., GOSHEN, NY 10924 - 518.452.1290
14-20 WILLET AVE., PORT CHESTER, NY 10573 - 914.939.0390

REVISIONS	
NO.	DESCRIPTION

NEW COXSACKIE HIGHWAY
GARAGE VILLAGE OF
COXSACKIE GREENE
COUNTY, NY

HIGHWAY GARAGE
EXISTING CONDITIONS
AND DEMO PLAN

SHEET:
FIG1

DRAFT

WARNING - IT IS A VIOLATION OF NEW YORK EDUCATION LAW SECTION 7209.2, FOR ANY PERSON, UNLESS HE IS ACTING UNDER THE DIRECTION OF A LICENSED PROFESSIONAL ENGINEER OR LAND SURVEYOR, TO ALTER THIS DOCUMENT IN ANY WAY. IF ALTERED THE ALTERING PERSON SHALL COMPLY WITH THE REQUIREMENTS OF NEW YORK EDUCATION LAW, SECTION 7209.2.